

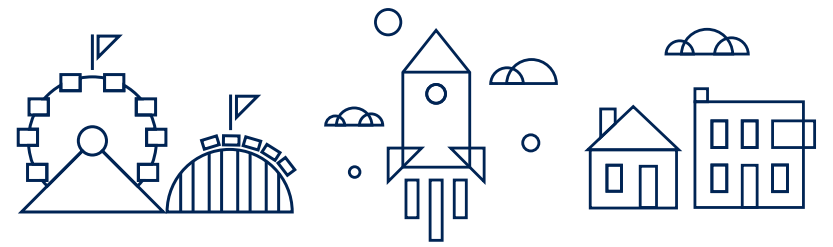


**WEBER**  
CREATIVE





# WHO WE ARE



Weber Group, Inc. was established in 1983 by brothers Tom and Donny Weber in Louisville, KY as an architecture firm and general contractor. Recognizing the need for creative thinking and custom fabrication paired with traditional construction, we began our theming division in 1992. Today, we have moved a few miles north to Sellersburg, IN, where our production facilities and offices have expanded to meet the rising demand of Weber Group's unique combination of construction know-how and creative excellence. We are a dedicated, passionate, and highly skilled team ready to **BUILD IDEAS FROM CONCEPT TO COMPLETION!**



# LEADERSHIP TEAM



## PARTNERS



**Max Weber**  
Chief Weber Officer

A second generation Weber, Max has been with the company since 2002, rising from the ranks and overseeing all aspects of the business.



**Adam McIntyre**  
Chief Creative Officer

Adam leads our creative team, directing the charge for the future and providing legacy guidance along the way.



**Jim Doiron**  
Chief Production Officer

With a fine art and construction background, Jim has the unique ability to oversee the Weber theme shop as well as manage production.



**Paul Ohlin**  
Chief Financial Officer

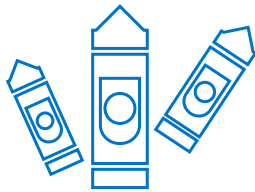
Paul provides leadership for financial, legal and management systems ensuring that Weber provides superior quality at the most competitive price.



**David Nofsinger**  
Chief Construction Officer

David manages our traditional construction division including multi-family housing, senior living facilities, and commercial office buildings.

## DESIGN



**Brad Stivers**  
Creative Director



**Ryan Jones**  
Design Director



**Damon Wilde**  
Art Director



**Amy Pender**  
Art Director

## BUILD



**Ricky Berg**  
Director of Fabrication



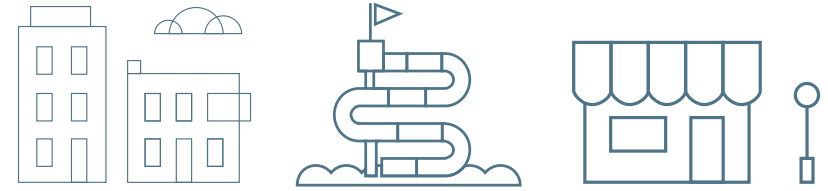
**Josh Huff**  
Fabrication Manager



**Tony Imbrogno**  
Director of Interactive Play



# WHAT WE DO



## DESIGN

- Brand Development
- Master Planning
- Architectural Services
- Concept Art
- Digital Modeling
- Narrative Development
- Graphic Design
- Technical Drawing
- IP & Brand Management

## BUILD

- Estimating
- Budgeting & Scheduling
- Construction Administration
- General Contractor Services
- Project Management
- Installation & Supervision
- Tenant Services
- Warranty Services
- Closeout Documentation

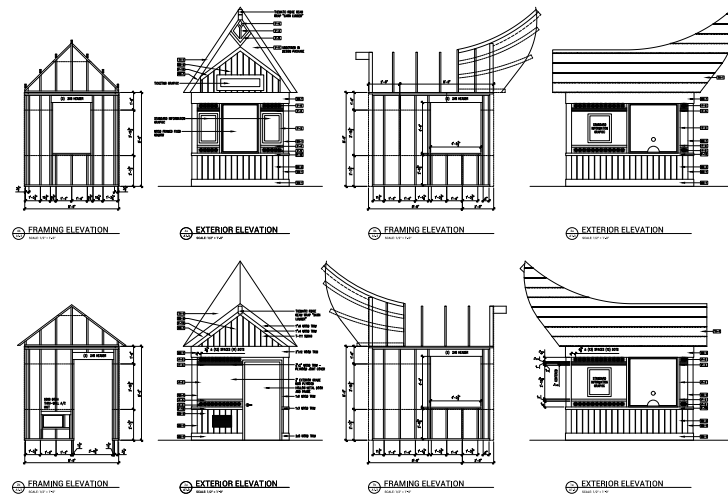
## FABRICATE

- 3 & 5-Axis CNC Milling
- Fiberglass
- Metal Fabrication
- Sculpting, Scenic Paint, & Murals
- Automotive-Grade Paint
- Carpentry
- Water-Play
- Signage & Graphics
- Tech Integration & Interactives



# DESIGN

We know that each client has a story to tell. Our design department strives to refine the story and bring it to life. With years of experience in every aspect of the design process, our team of talented designers and artists know how to make each project stand out.





# BUILD

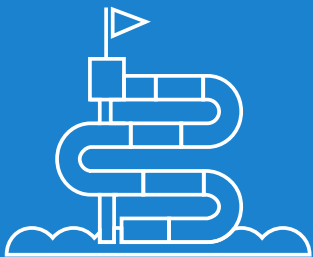
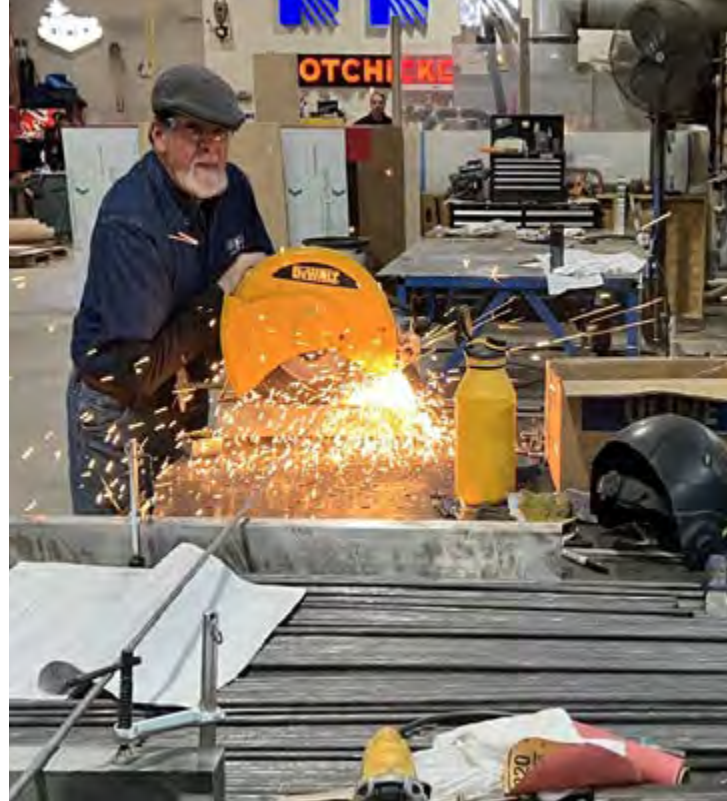
With a background in traditional construction, Weber can manage both theming and construction. This also gives us the unique insight to recognize and manage the work that falls between the two disciplines!





# FABRICATE

Our fabrication teams are comprised of highly skilled artists and craftspeople with a deep knowledge of the materials, tools and processes needed to bring ideas to life. We are driven to fabricate elements that are durable, in budget and fantastic.

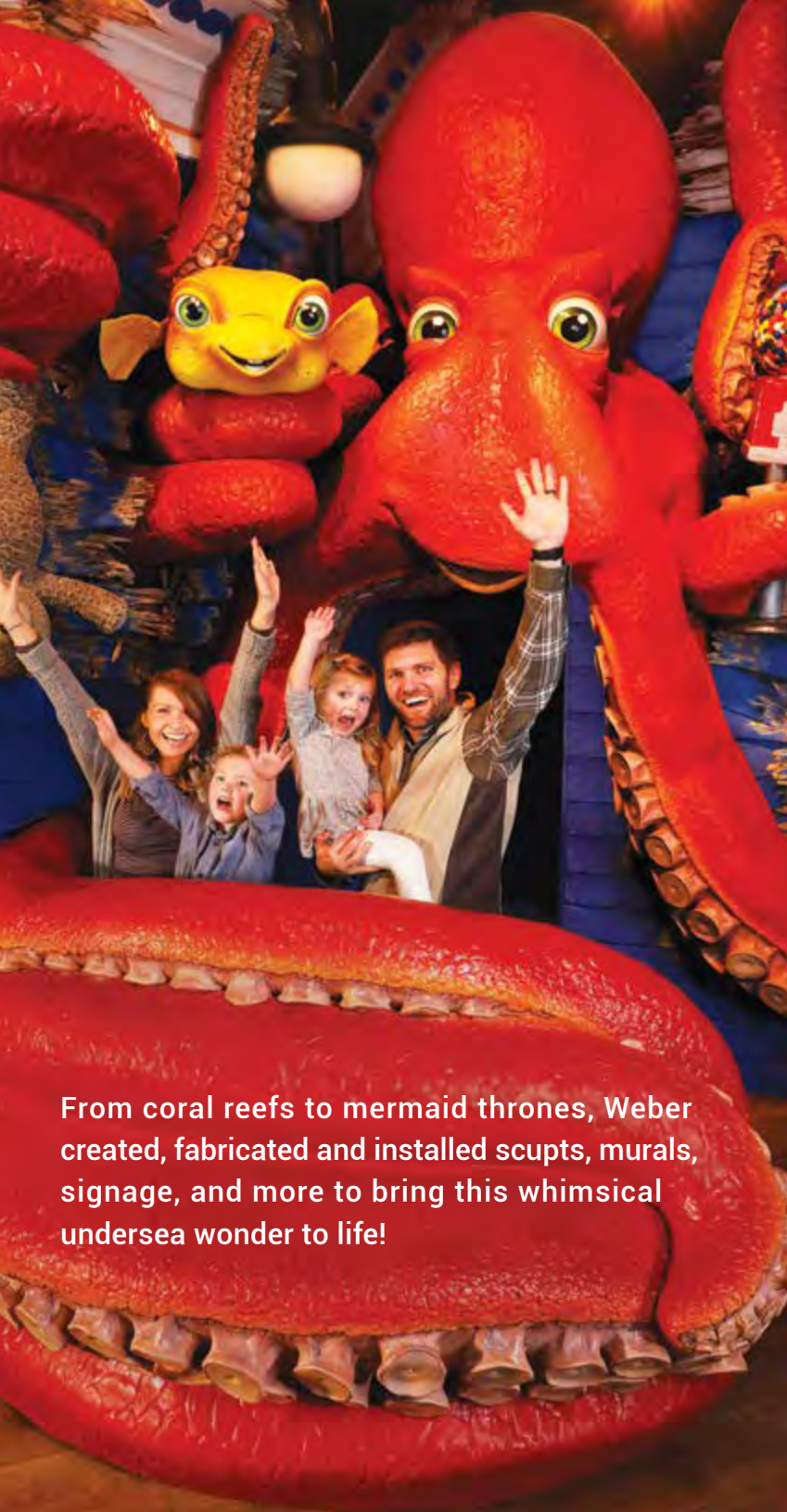






# RECENT PROJECTS





From coral reefs to mermaid thrones, Weber created, fabricated and installed scupts, murals, signage, and more to bring this whimsical undersea wonder to life!



## AQUARIUM ON THE BOARDWALK

LOCATION - Branson, MO

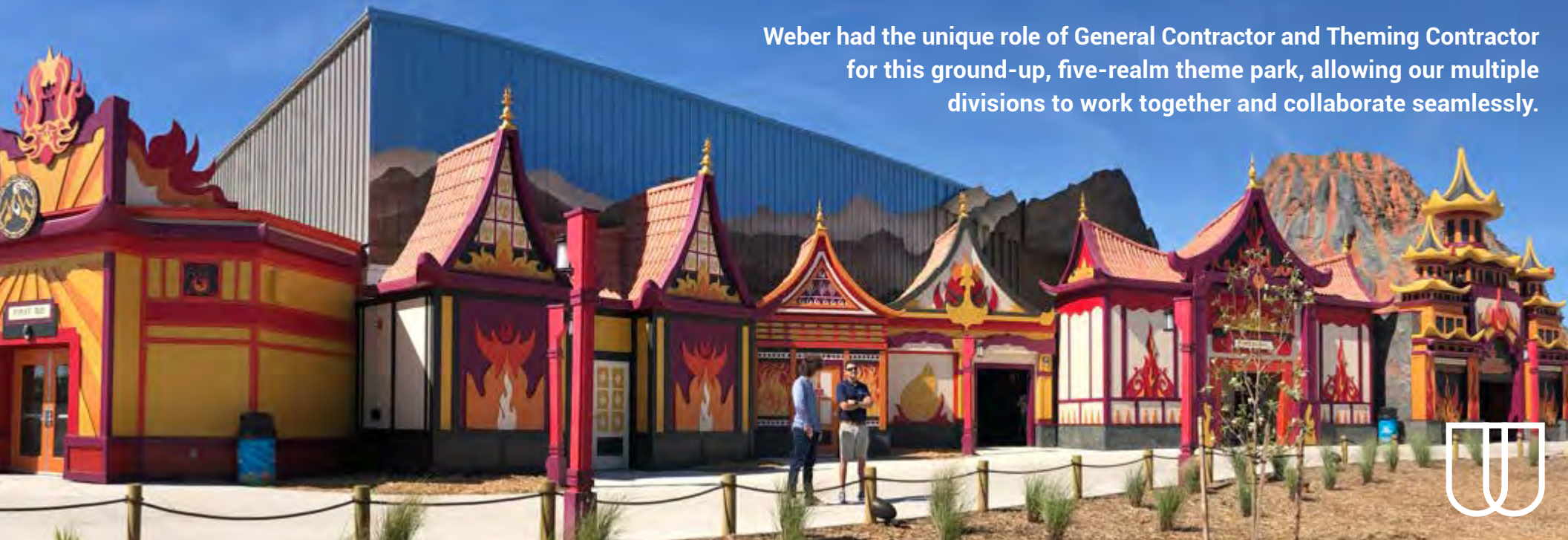
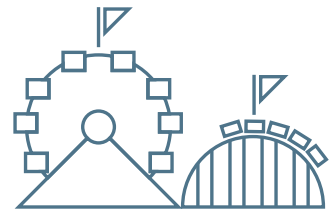






## LOST ISLAND

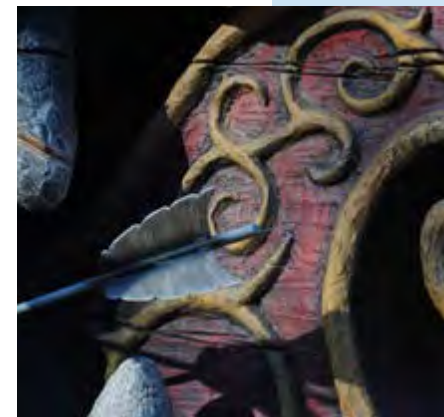
LOCATION - Waterloo, IA



Weber had the unique role of General Contractor and Theming Contractor for this ground-up, five-realm theme park, allowing our multiple divisions to work together and collaborate seamlessly.







# BUSCH GARDENS INVADR

LOCATION - Williamsburg, VA

Weber's scope included a giant, Viking-themed battering ram sculpt at the entry portal of the new coaster.

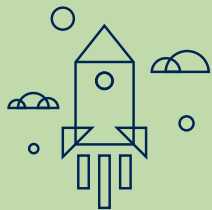






## KENNEDY SPACE CENTER

LOCATION - Titusville, FL



Weber designed and built this multi-tiered project including three interactive martian labs, each designed with unique problem solving challenges, and an interactive astronaut training experiences.



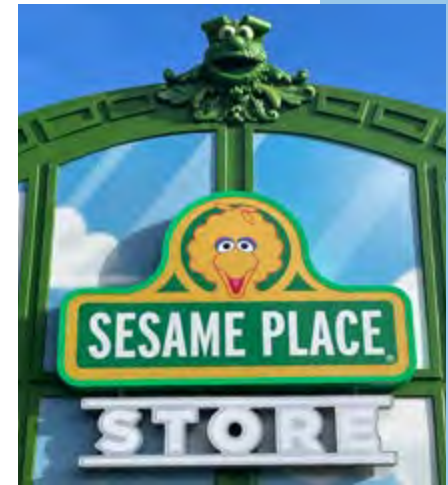
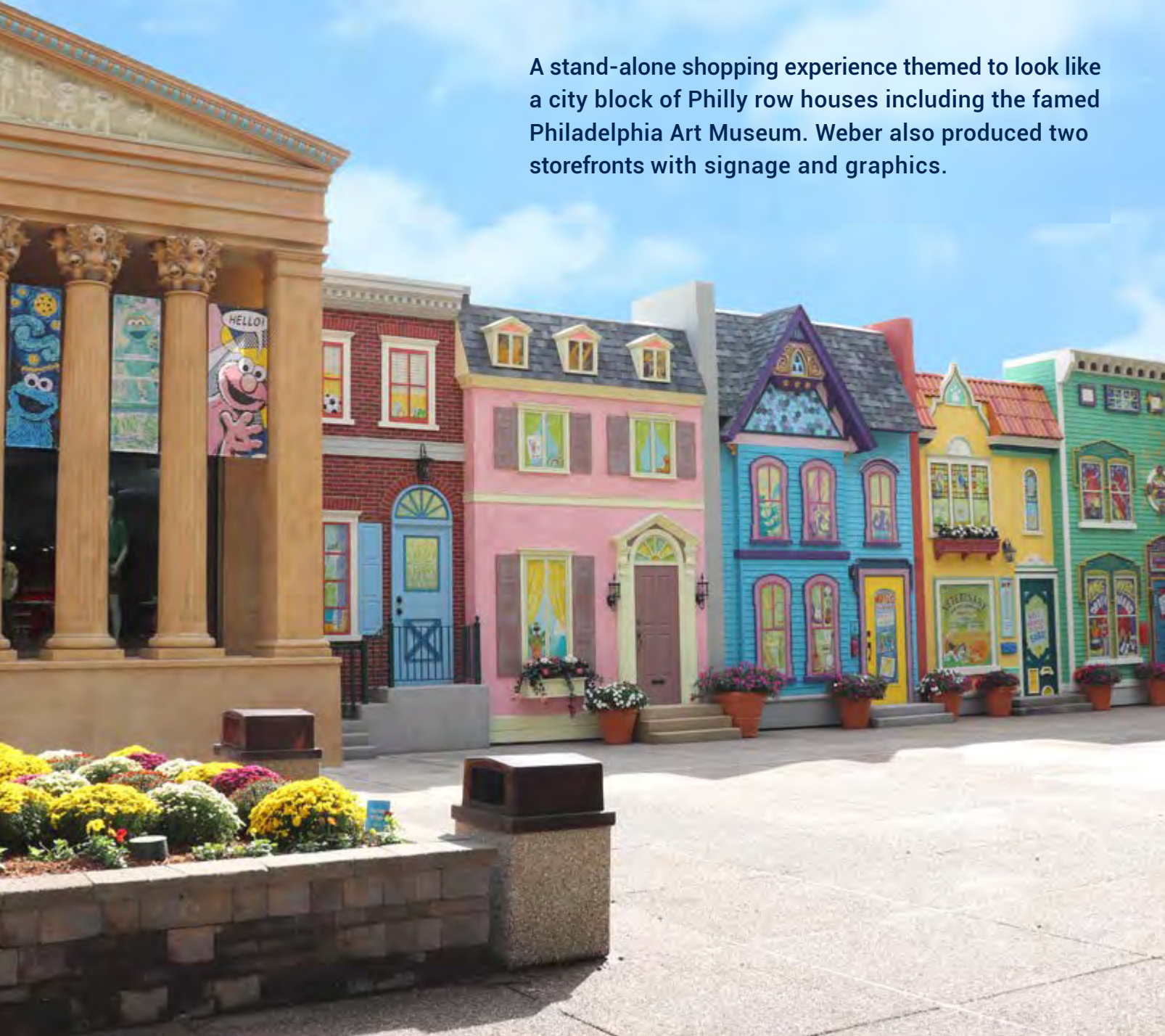




# SESAME PLACE STORE

LOCATION - Philadelphia, PA

A stand-alone shopping experience themed to look like a city block of Philly row houses including the famed Philadelphia Art Museum. Weber also produced two storefronts with signage and graphics.







## EL DORADO SPLASH PARK

LOCATION - El Dorado, AR

An iconic Razorback sculpt is the flagship feature of the waterplay environment at the City Splash Park. The splash zone was designed, fabricated, and installed by Weber.







## SEA WORLD RESTAURANTS

LOCATION - San Diego, CA

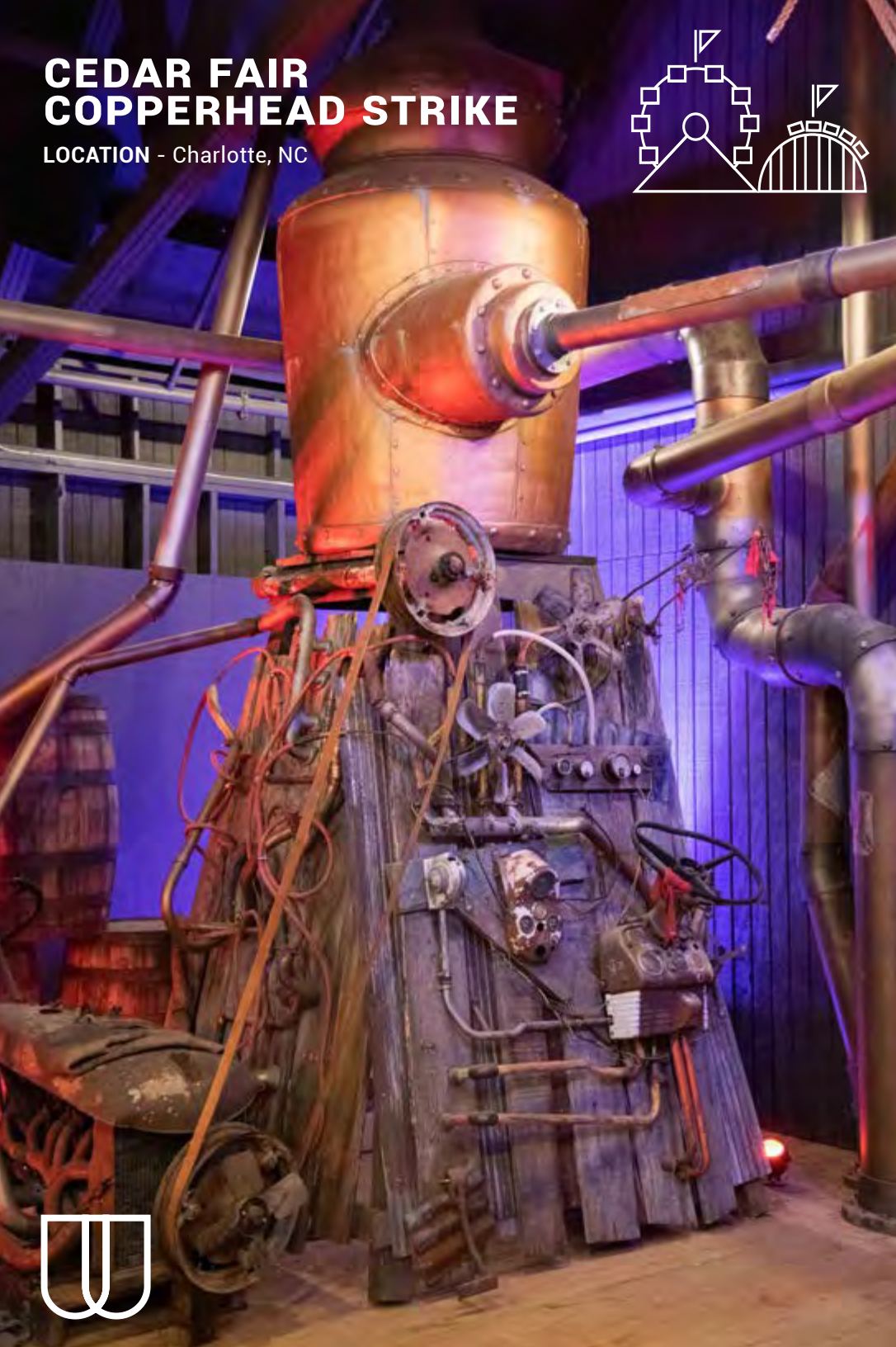
Sea World contacted Weber to refresh three of their existing restaurants, inside and out. The new look included concept and design, graphics, signs, and murals .





# CEDAR FAIR COPPERHEAD STRIKE

LOCATION - Charlotte, NC



The storyline behind this double launch roller coaster involves a family farm in the 1950's. Granny appears to be making jams but really makes moonshine! Weber designed, built and fabricated themed elements to support the story.







## CREATIVE DISCOVERY MUSEUM

LOCATION - Chattanooga, TN

Weber worked with the museum to create a new Stem Zone exhibit with multiple learning stations including robotics, a rocket launcher, energy experiments and more.







## AMERICAN DREAM DREAMWORKS WATER PARK

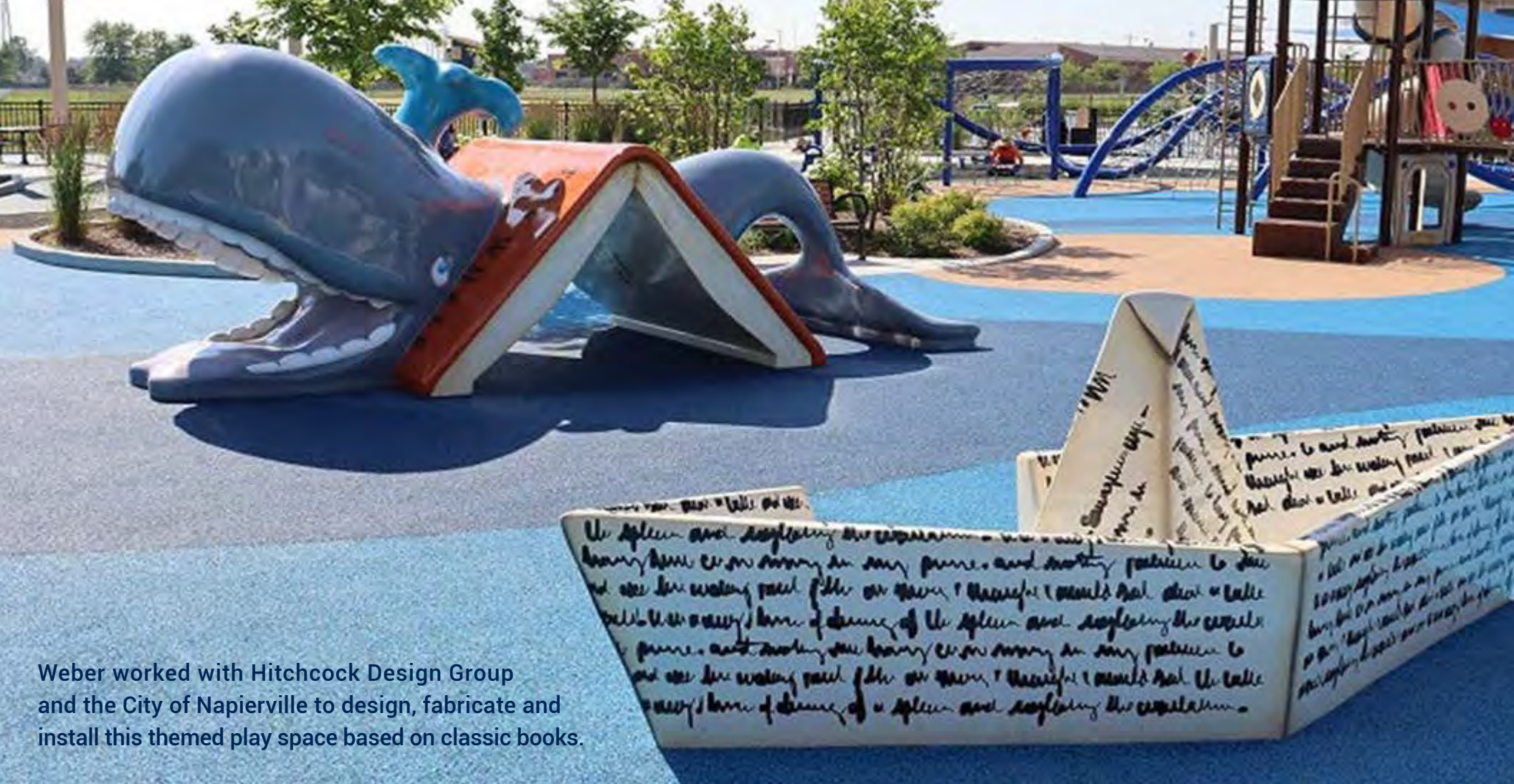
LOCATION - East Rutherford, NJ



Working with DreamWorks and the Hettema Group, Weber designed, built and installed water features located throughout the park including a large sculpted Shrek with a geyser, spraying dragon heads, tippy bucket trees and icicle themed pipe works.



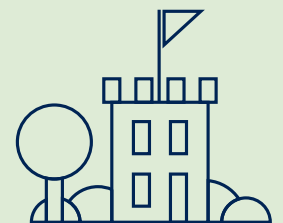




Weber worked with Hitchcock Design Group and the City of Naperville to design, fabricate and install this themed play space based on classic books.



**95TH STREET**  
LOCATION - Naperville, IL







## CEDAR FAIR SNAKE RIVER EXPEDITION

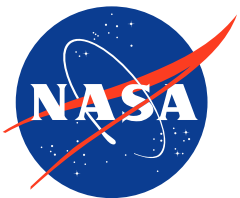
LOCATION - Sandusky, OH

This attraction is a tour around Adventure Island at Cedar Point. Weber set the scene with water features, animated vignettes, and themed river boats.





# OUR CLIENTS



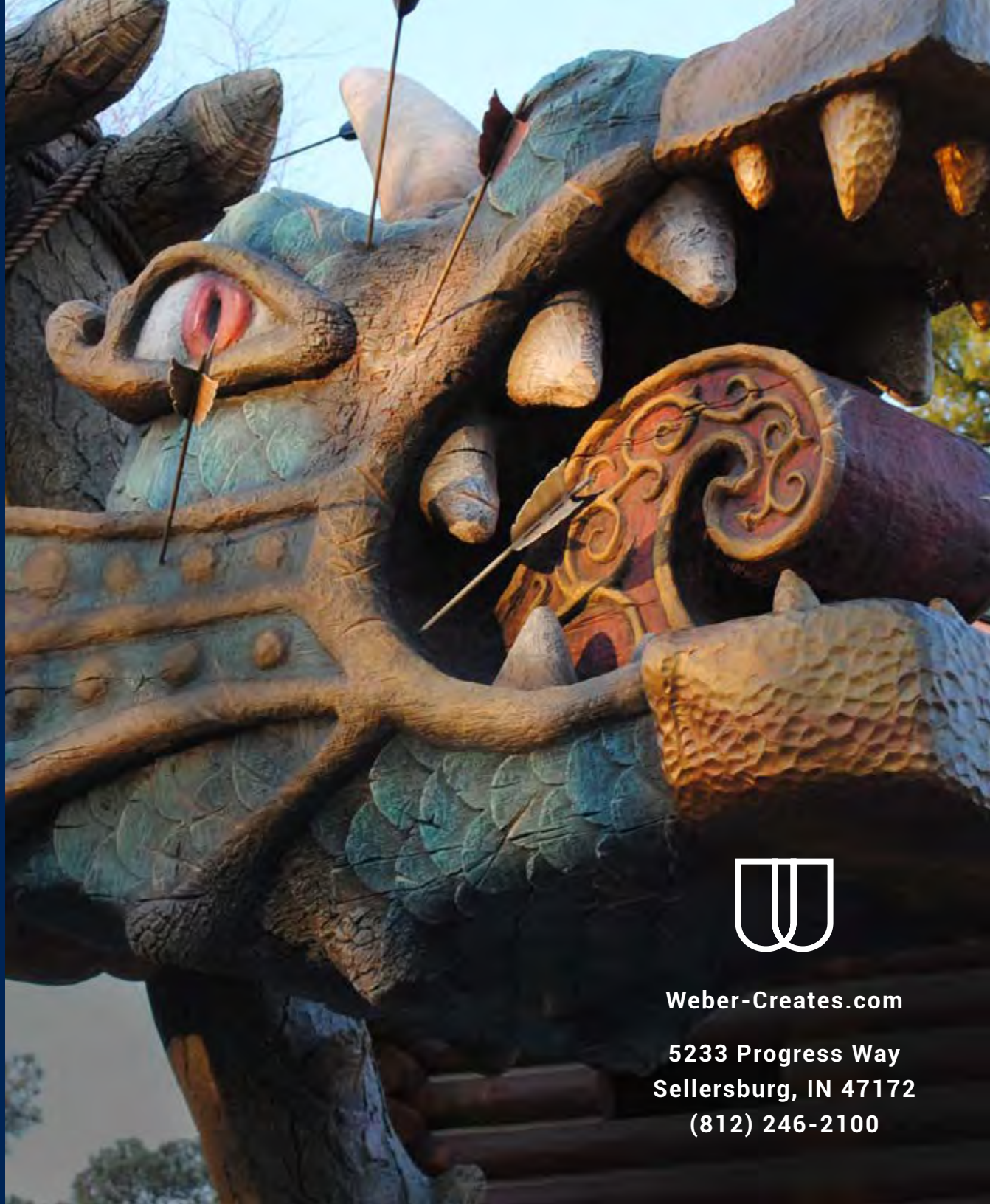
Please contact us for a complete list of clients or projects.





**"It's good to work  
with good people."**

**- Tom Weber, co-founder**



**Weber-Creates.com**

**5233 Progress Way  
Sellersburg, IN 47172  
(812) 246-2100**